

# We are proposing a change in your area

Kia ora,

This leaflet is to let you know about a change we are proposing to make in your neighbourhood.

## Proposal:

Reference	TR83-22 – Northland Road, Northland - Proposed P60 to P15 time limit
What we'd like to do	<ul style="list-style-type: none"><li>Convert the existing P60 To P15 Parking</li></ul>
Why we are proposing the change	<ul style="list-style-type: none"><li>We have received a request from the business owners on Northland Road to change the parking time limit outside the shopping area from P60 to P15 parking limit.</li><li>The business owners are concerned that these existing P60 parking spaces outside their shops are underutilized which may result in a loss of customers. The existing one-hour time limit reduces the availability and turnover of parking for their customers.</li></ul>
Location – where we propose to make the change	Northland Road, Northland – outside no.51
Impact	<ul style="list-style-type: none"><li>Improves the accessibility of customers to the businesses.</li><li>Net parking impact – time restriction changes only.</li></ul>
How this relates to the parking policy	<ul style="list-style-type: none"><li>Support business wellbeing – ensure parking management and pricing controls support economic activity across the city, suburban centres and mobile trades and services.</li></ul>
Additional Information	<ul style="list-style-type: none"><li>Average daily traffic count – 3,735</li><li>To view the legal description for this Traffic Resolution, an electronic copy of the report will be available on the Council's website from 9.00am Monday 27 June 2022 at <a href="https://www.letstalk.wellington.govt.nz/">https://www.letstalk.wellington.govt.nz/</a> or you can call (04) 499 4444 and we will send one out to you.</li></ul>
Feedback	<ul style="list-style-type: none"><li>If you would like to provide us with specific feedback, you can do so by filling out an online submission form, downloading a printable submission form on <a href="http://www.wellington.govt.nz/haveyoursay">www.wellington.govt.nz/haveyoursay</a> or emailing us at <a href="mailto:trfeedback@wcc.govt.nz">trfeedback@wcc.govt.nz</a>.</li><li><b>Please note if you are giving feedback the consultation period opens at 9.00 am Monday 27 June 2022 and finishes at 5.00 pm Sunday 10 July 2022.</b></li><li>What we do with your personal information: All submissions (including name, but not contact details) are provided in their entirety to elected members and made available to the public at our office and on our website. Personal information (including contact details) will also be used for the administration of the consultation process including informing you of the outcome of the consultation. All information collected will be held by Wellington City Council, 113 The Terrace, Wellington, with submitters having the right to access and correct personal information.</li></ul>

# We are proposing a change in your area

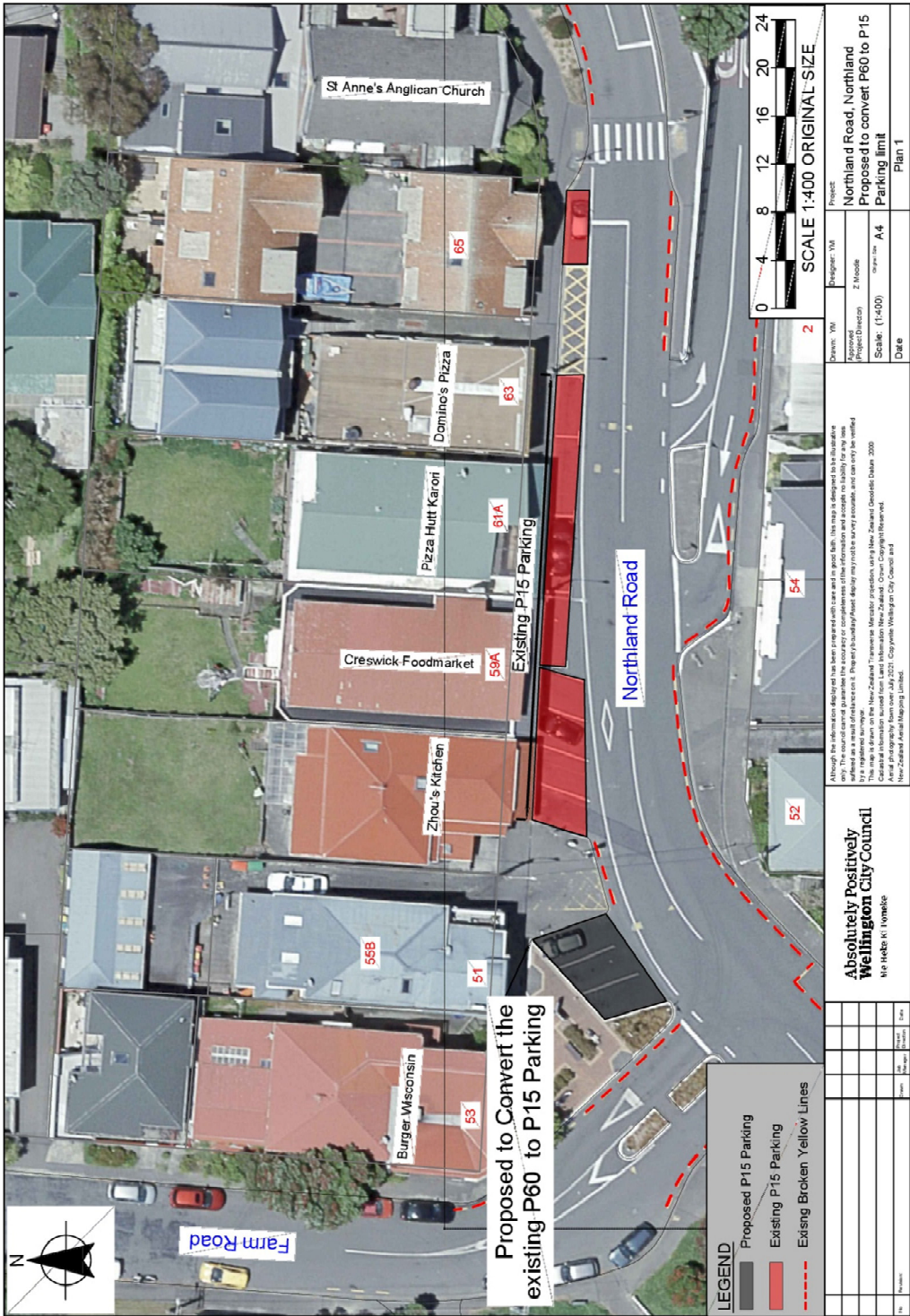
**Absolutely Positively  
Wellington City Council**  
Me Heke Ki Pōneke

## Next Steps

1. Feedback collated by Monday 11 July 2022.
2. The proposal will go to the Regulatory Processes Committee on Wednesday 10 August 2022.
3. If approved, the proposal will be installed within the following three months.

We are proposing a change in your area

Traffic Resolution Plan: TR83-22 – Northland Road, Northland - Proposed P60 to P15 time limit



# We are proposing a change in your area

## Legal Description:

*Delete from Schedule A (Time Limited) of the Traffic Restrictions Schedule.*

Column One	Column Two	Column Three
<b>Northland Road</b>	<i>P60, At All Times</i>	<i>North side, commencing 4 metres east of Farm Road and extending in an easterly direction following the northern kerbside for 9 metres. (Angle parking)</i>

*Add to Schedule A (Time Limited) of the Traffic Restrictions Schedule*

Column One	Column Two	Column Three
<b>Northland Road</b>	<i>P15, At All Times</i>	<i>North side, commencing 4 metres east of Farm Road (Grid coordinates x= 1,747,138,24m, y= 5,428,300,96m), and extending in an easterly direction following the northern kerbside for 9 metres. (Angle parking)</i>

**Prepared By:** Yohannes Mesfun **(Graduate Transport Engineer)**

**Approved By:** Zackary Moodie **(Team Leader Transport Engineering)**

**Date:**